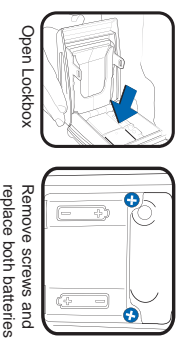


Battery Replacement

1. Insert your SentriCard® and enter PIN+ENT.
2. Remove your SentriCard® and open the lockbox to access the Battery cover.
3. Remove both Phillips screws that hold the battery cover (show on the illustration).
4. Replace both CR 123A batteries following the polarity symbols correctly.

WARNING: Inserting batteries with wrong polarity will permanently damage lockbox! Do not allow the lockbox to close with the batteries removed.

5. Place battery cover and tighten the screws.



Open Lockbox
Remove screws and replace both batteries

LockBox Commands Quick Overview

- Release Shackie from your lockbox:
FUNC + 1 + ENT
- Release Shackie from a lockbox you don't own:
FUNC + 1 + Shackie Code + ENT
- Set Lockbox Location:
FUNC + 2 + MLS Number + ENT or
FUNC + 2 + Address Number + ENT
- Open Key Compartment:
FUNC + 3 + ENT
- Turn ON Contractor Mode:
FUNC + 6 + 1 + ENT
- Turn OFF Contractor Mode:
FUNC + 6 + 0 + ENT
- Turn ON CBS Mode:
FUNC + 6 + 9 + ENT
- Turn OFF CBS Mode:
FUNC + 6 + 8 + ENT
- Download Audit / Access Log from a lockbox:
FUNC + 7 + ENT
- Lock the keypad:
FUNC + 6 + 7 + ENT

How to Get Help...

SentriLock provides technical support services 7 days a week to all REALTOR® Lockbox customers.
Phone: 1-877-736-8745
 8:00AM-5:00PM your local time

• Send details via e-mail:
support@sentrilock.com

• On the Web:
<http://lockbox.sentrilock.com/>
 click on "Support" button

• SentriLock Card Utility:
 Click on "Help" menu item and select "Support..."



Smart Lock, Smart Card, Smart Choice™

www.sentrilock.com • 877-736-8745

© 2008 SentriLock, LLC

Pocket Reference Guide



REALTOR® Lockbox INT

IMPORTANT: You will need your SentriCard® and Personal Identification Number (PIN) to perform the following operations

Opening the Key Compartment

1. Insert SentriCard gold chip contact up.
2. Wait for CODE light.
3. PIN(****) + ENT.
4. Remove card.
5. Open key bin.

Removing Shackie

1. Insert SentriCard®.
2. PIN + ENT.
3. Wait for READY light.
4. FUNC + 1 + ENT.
5. Remove shackie.
6. Wait for READY light before re-inserting shackie.

Placing your Lockbox on a Listing

1. Remove shackie.
2. Leave your Sentri-Card inserted.
3. FUNC+2 followed by MLS or address #.
4. Press ENT when complete.
5. FUNC + 3 + ENT.
6. Open Key Bin.

Renew Card at Lockbox

1. Call 877-736-8745 option # 2.
2. Insert Card.
3. FUNC 0 + renewal code + ENT.
4. Remove & re-insert card. Use normally.
7. Hang lockbox from secure spot in a vertical orientation.
8. Press the shackie into the lockbox.